



CEMHER

- ORIGIN -

西班牙 微水泥系統
無縫地坪 | 天地壁塗料

可施作表面

磁磚/水泥/矽酸鈣板/水泥板/甲板

*水泥面：須為水泥粉光面，基面需平整無超過1mm之凹凸。

*甲板/矽酸鈣板/水泥板/底漆板：

板縫需填補 A B 膠兩次並批土，及釘孔批土後，兩次油性底漆進行封底。

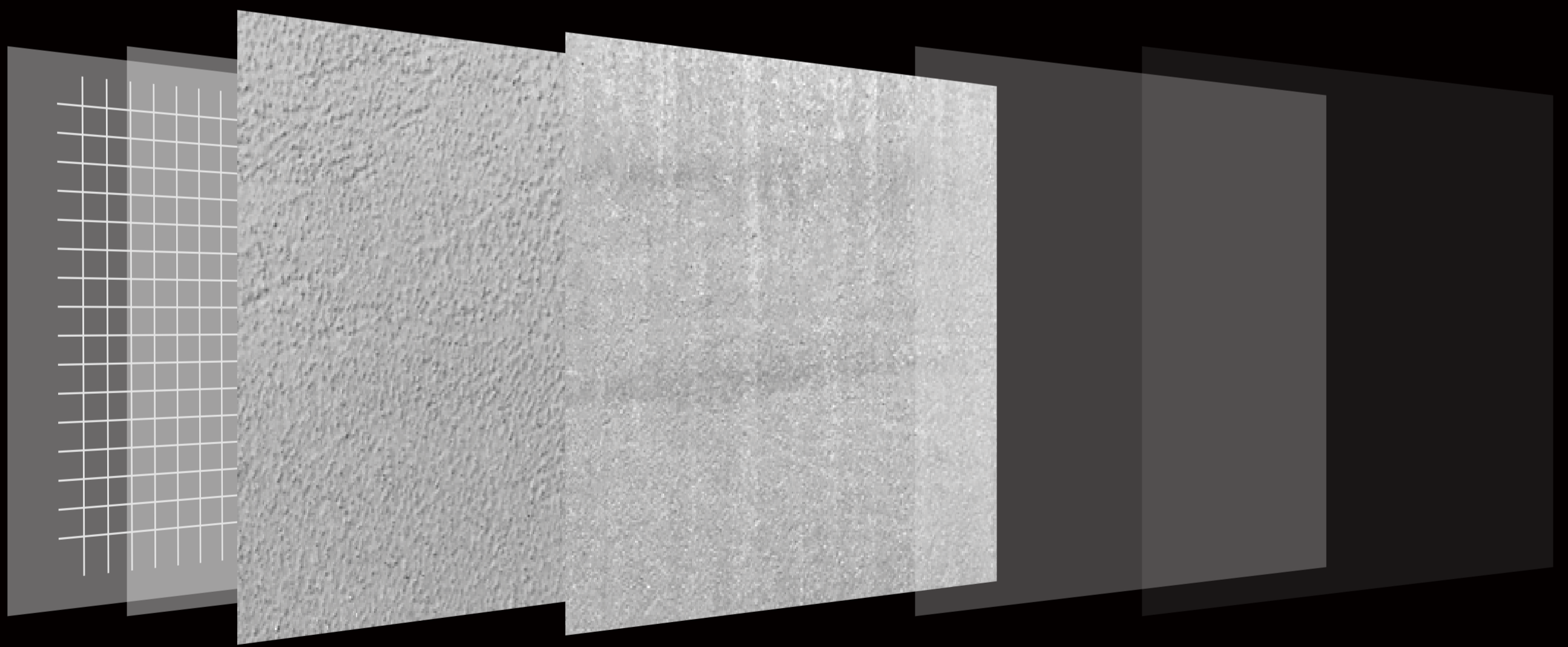
*磁磚面：

需確保磁磚面的部分無澎拱現象，

若有此現象要敲除，且處理好防水及泥作填平。

施工工序

保護/底漆/纖維網/粗底材/細面材/封閉/面漆/養生



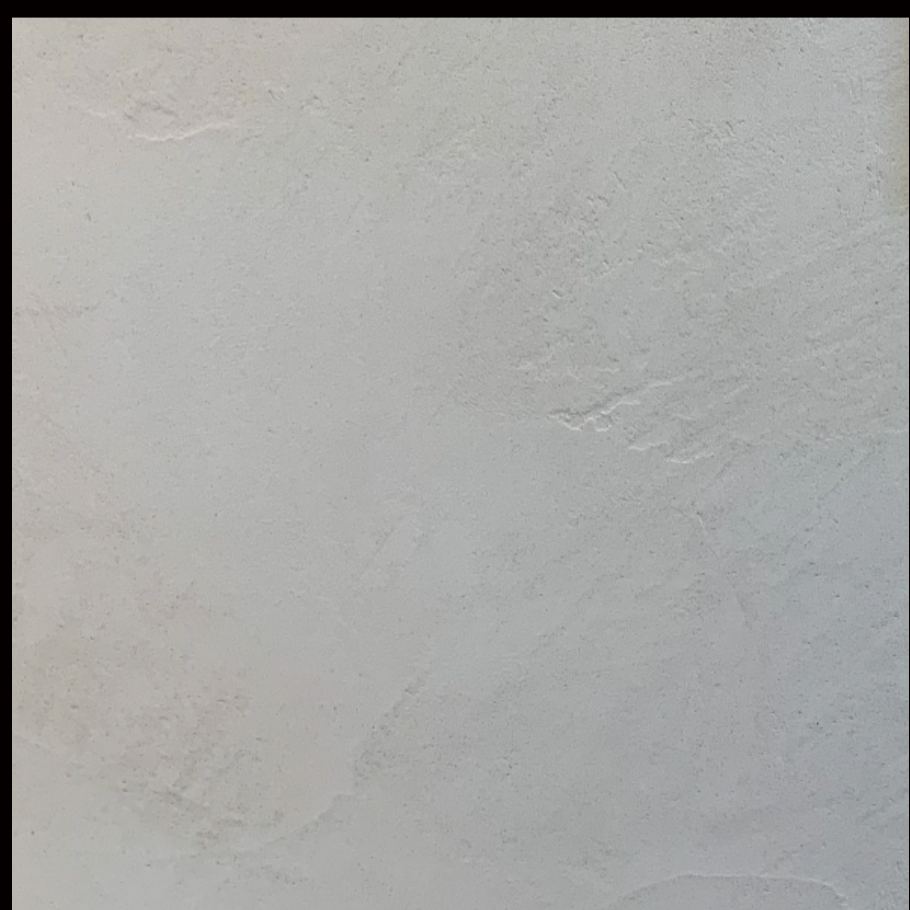
底漆二次 →→ 底材二次 →→ 面材二次 →→ 封閉二次 →→ 面漆二次

(地面及磁磚面增玻璃纖維網一次)

工程完成後

2天 表面乾燥期 不可觸碰踩踏 / 7天 內部乾燥期 不可重壓 / 28天 完全乾燥

完成面



自然鏝抹紋



深淺蛋殼紋

養護

於完全乾燥後可正常使用，可使用中性清潔劑清潔表面，切勿使用鬃刷、鐵刷、利器、刀片、尖銳物品等，此皆有可能傷其表面。

色卡



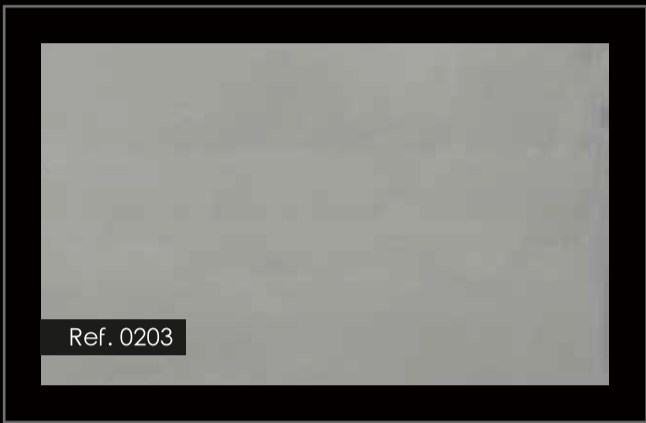
Selenita



Gobi Desert



Piedra de lago



Titanium



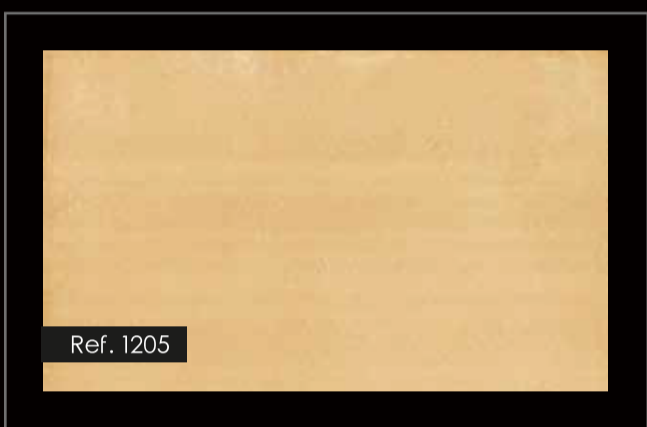
Vino blanco



Chocolate



Grafeno



Malta



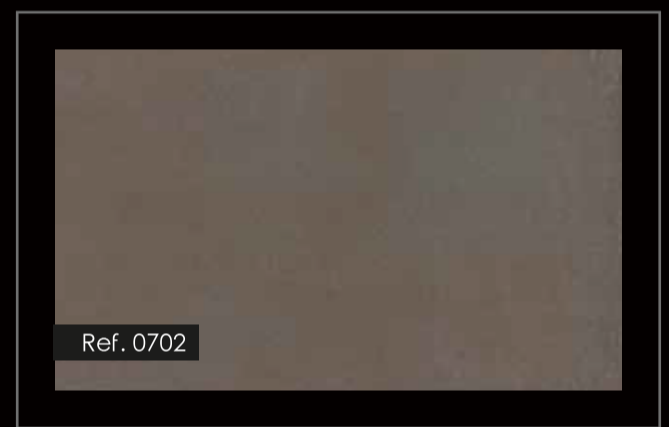
Smoked topaz



Roca alpina



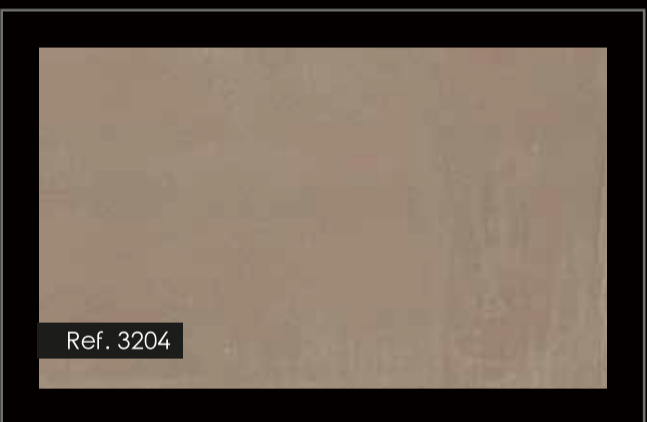
El álamo



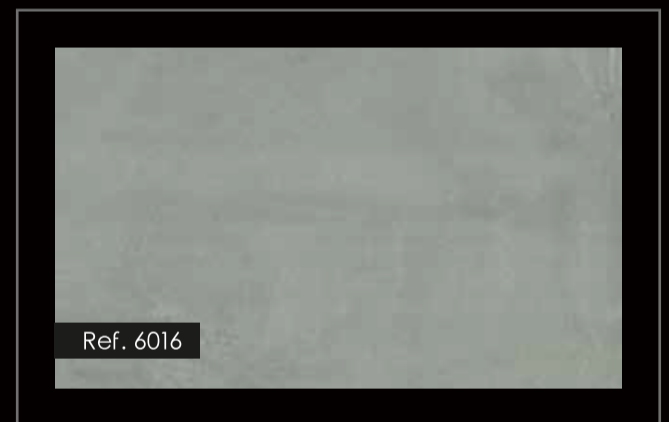
Deer



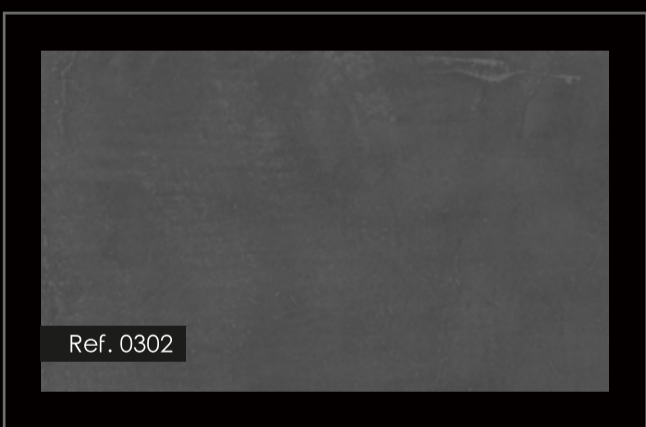
Montblanc



Bisón



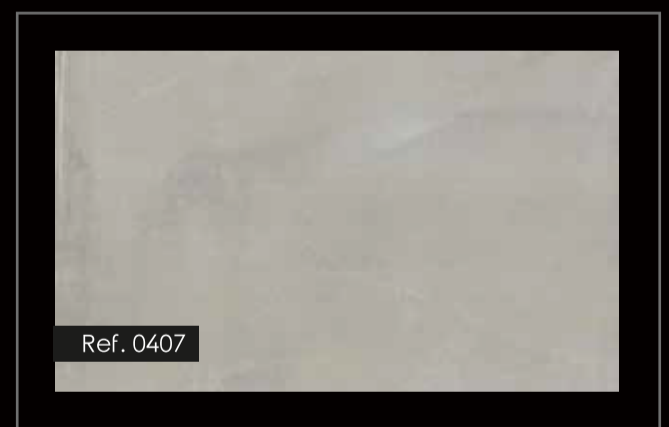
Teide



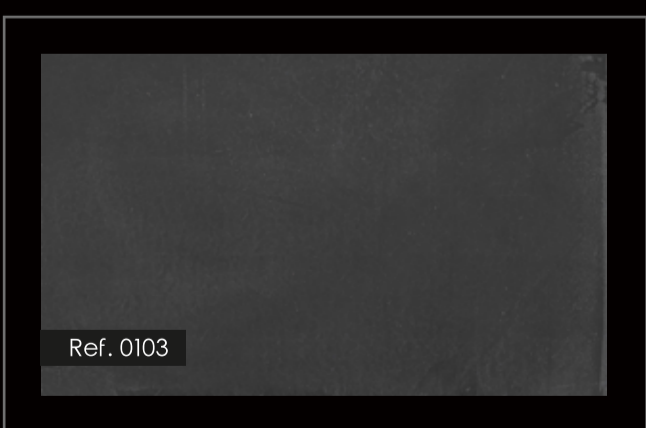
Crater volcanico



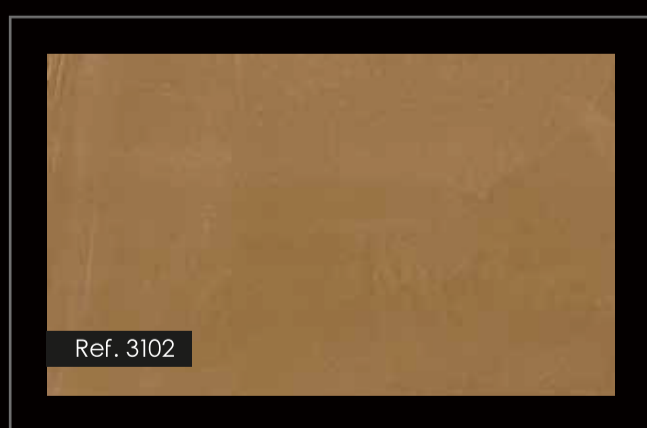
Heno viejo



Nebulosa



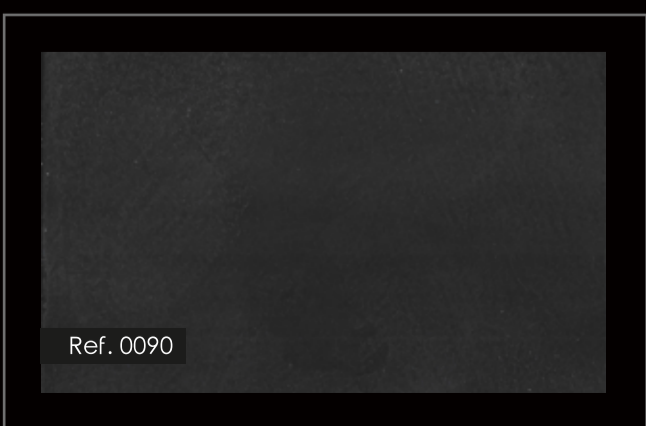
Obsidiana



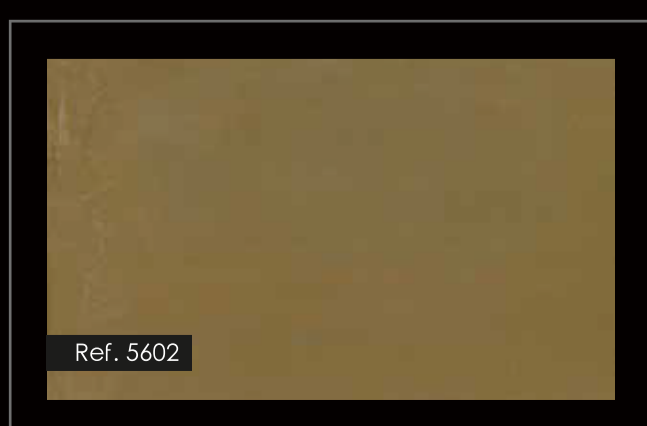
Safari



Concrete



Galaxy

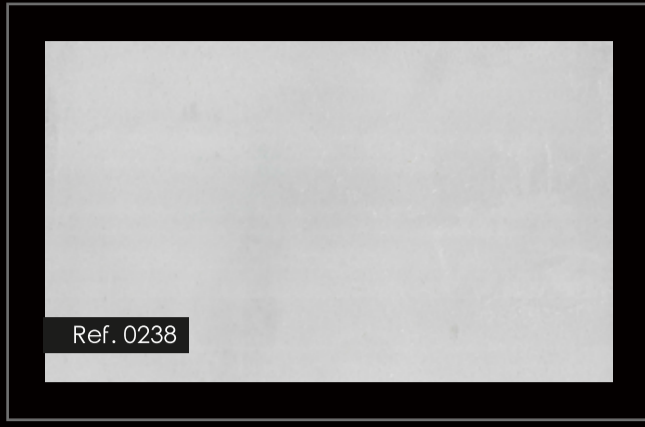


Parrot



Acero

色卡



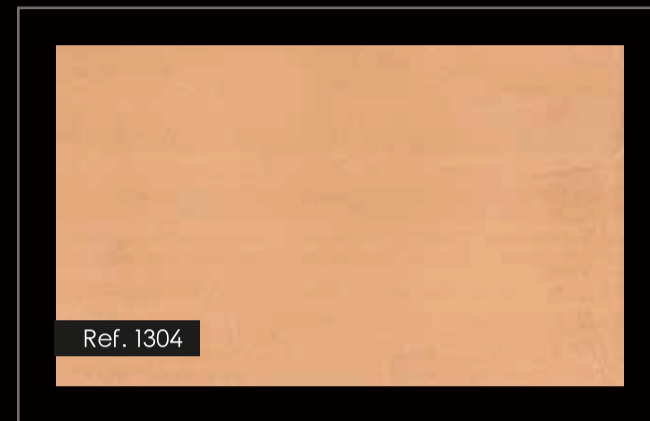
Diamond



Escorial



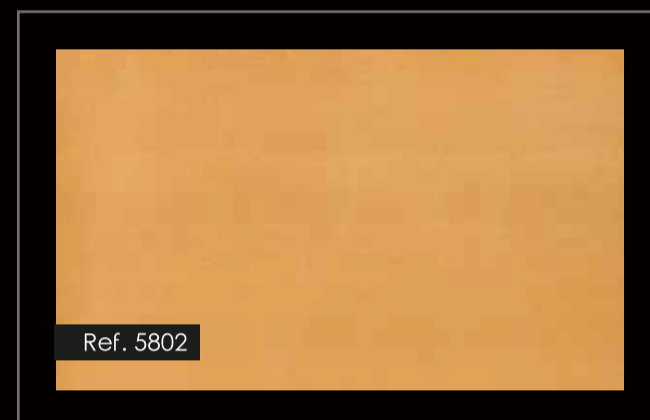
Nepal



Sunset



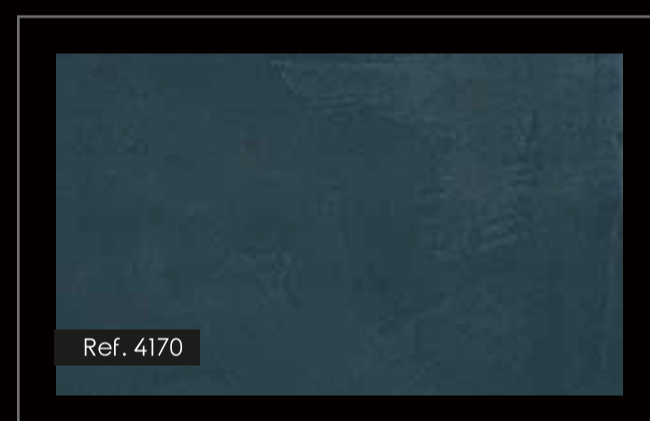
Everest



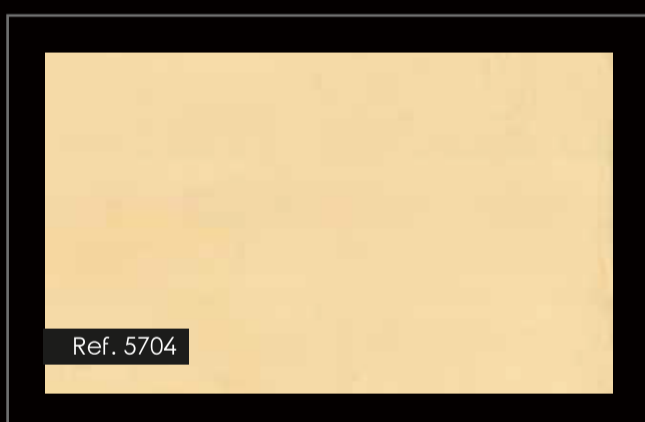
Giallo Horus



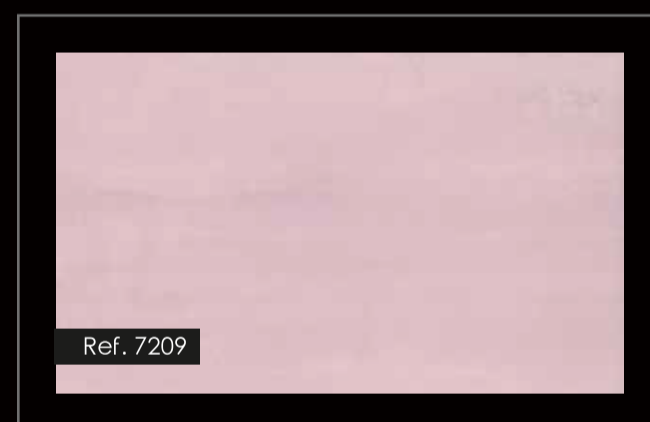
Nicaragua



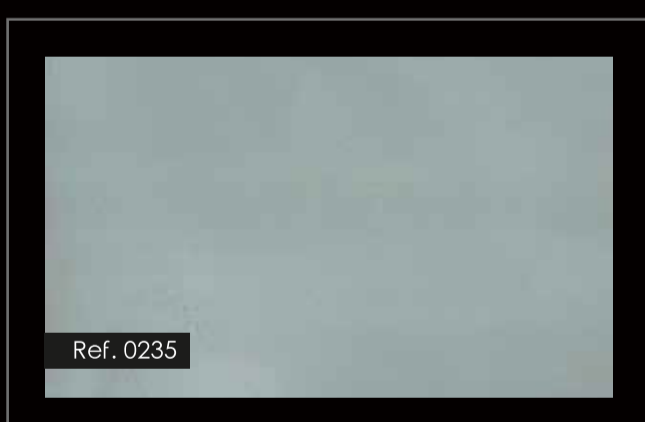
Ocean



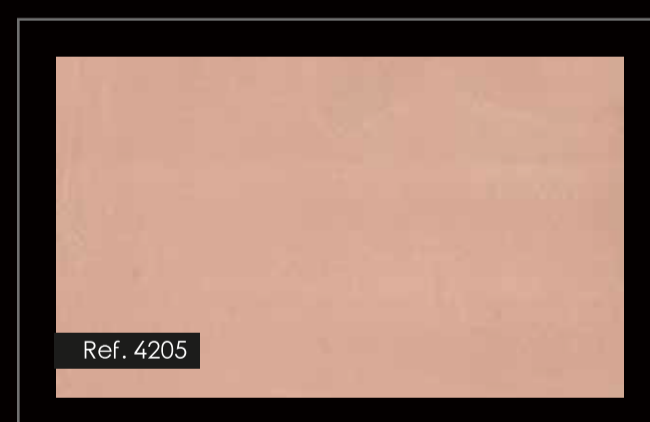
Midas



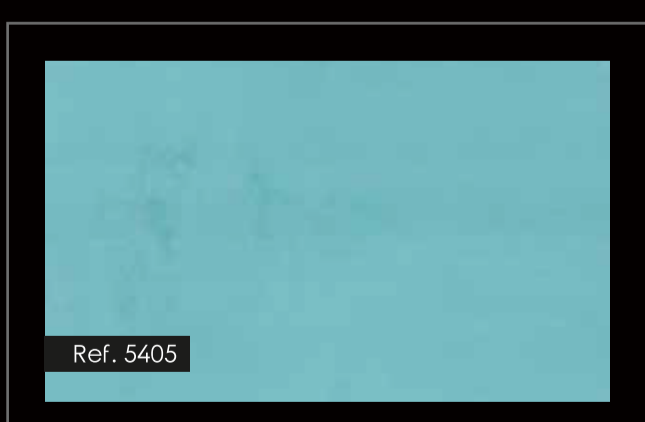
Industrial Chic



Silver



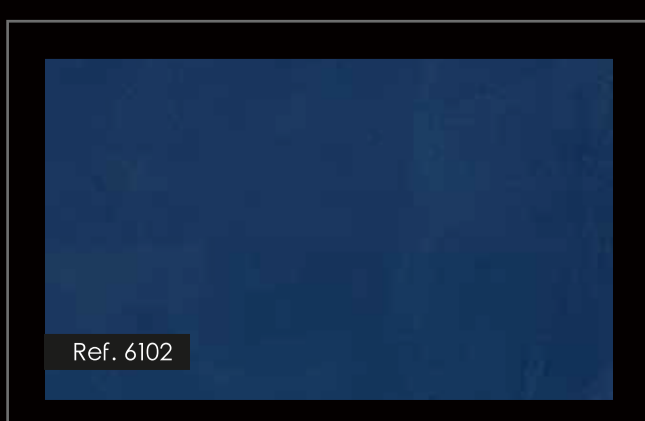
Coral



Bora bora



Red planet



Poseidón



Vino tinto



優勢

- ✓ 適用多數基面
- ✓ 無需剔除磁磚
- ✓ 無形狀限制
- ✓ 堅固耐用
- ✓ 無交接縫隙
- ✓ 高耐汙
- ✓ 抗紫外線
- ✓ 適用於天地壁檯面
- ✓ 內外牆皆可用
- ✓ 顏色多元



實際案例



Before



After

實際案例



Before



After